



# Material Evaluation Process

---

RRA ADVISORY COUNCIL

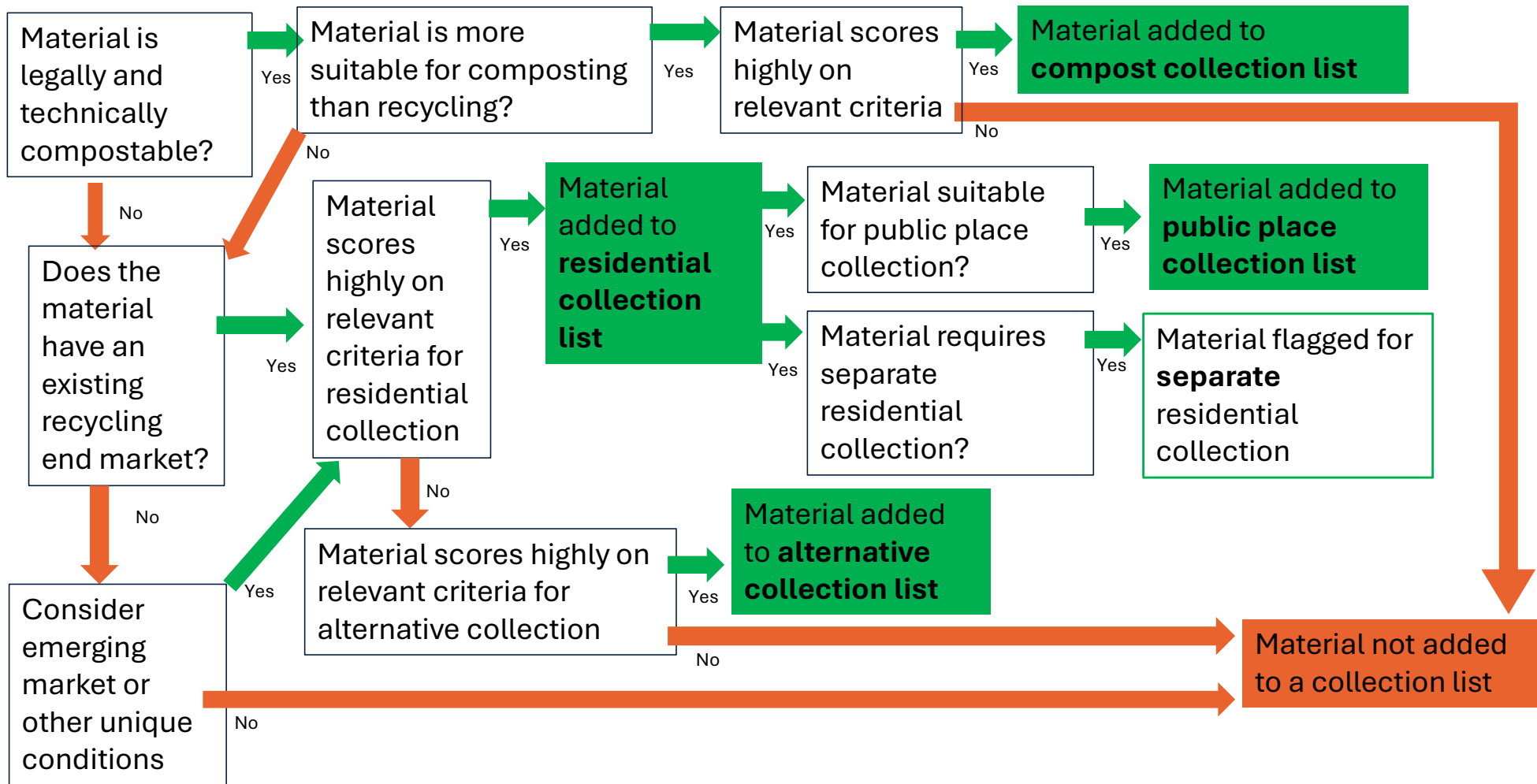
JOEL SCHOENING • JUNE 11, 2026

# Evaluation Approach

Build on Existing Work	Prioritize Impactful Criteria	Draw on Consulting Team Expertise
<p>Draw on other states' evaluations.</p> <p>Document materials with well established recovery and end markets</p>	<p>Certified compostable</p> <p>End Markets</p> <p>Well established "disqualifiers"</p>	<p>Criteria evaluations conducted by team members with applicable expertise and experience</p>

**Note: Not every material will be rated on all criteria/rating factors.**

# Material Evaluation Process Flow Chart



# Evaluation Timeline: Phases 1 & 2

- Phase 1 – Initial Scan: 5/13- 5/22:
  - > RRS/CCG scan for “obvious” list candidates
  - > *Consensus* materials will be preliminarily designated to lists
- Phase 2 – Pilot Criteria and Evaluation Alignment: 5/22 – 6/11
  - > Consulting team selected 8 representative materials.
    - Certified compostable plastics single use utensils
    - Certified compostable coated food service paper
    - Glass bottles
    - PE bag and film, non food packaging
    - Gable top container
    - Steel and tin cans
    - #5 PP bottles and containers
  - > Conduct initial evaluation, compare processes for consistency

# Evaluation Timeline: Phases 3 & 4

- Phase 3 – Iterative Lists w/ Council & Subcommittee: 6/11 – 8/16
  - > Refine evaluation process based on advisory board feedback (today!)
  - > Conduct initial evaluation of full list of materials
  - > Designate materials to each of the four lists (or not listed)
  - > Present lists to subcommittee and advisory committee July/August
- Phase 4 – Final List Refinement: 8/17 – 9/17
  - > Incorporate feedback from Council and Subcommittee
  - > Conduct additional research/analysis as needed
  - > Prepare final lists for presentation to council 9/17
  - > Final list submission to Ecology 10/1